

EFX[®] 685

Experience[™] Series

ELLIPTICAL FITNESS CROSSTRAINER[®]

FS
Fitness Solutions

Product Features

1. Adjustable CrossRamp[®]

With our patented CrossRamp, exercisers can isolate or cross-train specific lower body muscle groups by adjusting the angle of the ramp between 10 and 35 degrees, making it easy for exercisers to focus on their individual fitness goals.

2. P84 Touchscreen Console

The P84 console offers a brilliant 16-inch touchscreen that provides the best blend of performance, fitness, and entertainment that your exercisers expect. It's designed to deliver a best-in-class content suite with engaging workouts, wireless casting with access to thousands of third-party workout and media apps, and integrated Pluto TV, so exercisers always have the content they want, right at their fingertips.

3. Handlebars

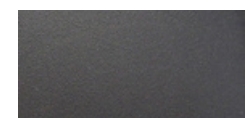
With moving handlebars, exercisers can push and pull with their upper body to achieve a total body workout.

4. Step-Up Height & Pedal Spacing

The low step-up height improves accessibility and the optimized pedal spacing provides a more natural and comfortable feel.

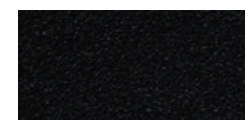
5. Covered Rear Drive Housing

Experience easy maintenance with a covered rear drive housing that enables quick access for cleaning and service.



Storm Grey

Refined colorways with dark Tungsten covers and two frame color options, Storm Grey and Black Pearl.



Black Pearl

Specifications

Dimensions (L x W x H): 82 x 30 x 71 in / 208 x 76 x 180 cm

Product Weight: 315 lb / 143 kg

Step-up Height: 8 in / 20 cm (pedal at lowest point)

Power: 120 volt, 15 amp circuit

Total Workouts: 22

Resistance Levels: 20

Ramp Angle: 10 - 35 degrees

Languages: English, Danish, Dutch, French, Finnish, German, Italian, Japanese, Korean, Norwegian, Polish, Portuguese, Russian, Simplified Chinese, Spanish, Swedish, Traditional Chinese, Turkish

Console Features: 16 in / 40.6 cm LCD Capacitive Touchscreen with wireless charging, audio jack, and Bluetooth[®] headphones

Accessories: Integrated Reading Rack
Optional - Cable Management

Warranty: Visit www.precor.com for warranty terms.

PRECOR.COM/CARDIO

© 2023 Precor Incorporated.

PRECOR[®]

EFX® 685

Experience™ Series

ELLIPTICAL FITNESS CROSSTRAINER®

FS
Fitness Solutions

Product Features

1. Adjustable CrossRamp®

With our patented CrossRamp, exercisers can isolate or cross-train specific lower body muscle groups by adjusting the angle of the ramp between 10 and 35 degrees, making it easy for exercisers to focus on their individual fitness goals.

2. P82 Touchscreen Console Connects to Apple Watch®

The P82 console offers a brilliant 15 inch screen that's ergonomically positioned to deliver crystal clear entertainment viewing for exercisers in motion. When networked, it is also a direct-to-exerciser communication portal allowing you an opportunity to build your brand, share information about activities and services, and strengthen the sense of community within your facility. Available with the optional Precor Smart Watch Connector for Apple Watch®.

3. Handlebars

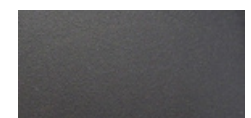
With moving handlebars, exercisers can push and pull with their upper body to achieve a total body workout.

4. Step-Up Height & Pedal Spacing

The low step-up height improves accessibility and the optimized pedal spacing provides a more natural and comfortable feel.

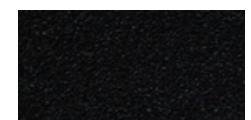
5. Covered Rear Drive Housing

Experience easy maintenance with a covered rear drive housing that enables quick access for cleaning and service.



Storm Grey

Refined colorways with dark Tungsten covers and two frame color options, Storm Grey and Black Pearl.



Black Pearl

Specifications

Dimensions (L x W x H): 82 x 30 x 72 in / 208 x 76 x 183 cm

Product Weight: 315 lb / 143 kg

Step-up Height: 8 in / 20 cm (pedal at lowest point)

Power: 120 volt, 15 amp circuit

Total Workouts: 22

Resistance Levels: 20

Ramp Angle: 10 - 35 degrees

Languages: English, Danish, Dutch, French, Finnish, German, Italian, Japanese, Korean, Norwegian, Polish, Portuguese, Russian, Simplified Chinese, Spanish, Swedish, Traditional Chinese, Turkish



Apple Watch is a trademark of Apple Inc., registered in the U.S. and other countries and regions.

Console Features: 15 in / 38.1 cm LCD Capacitive Touch Screen with mobile device charger, audio jack and optional Smart Watch Connector for Apple Watch®

Network Capabilities: Preva® network capable

Accessories: Integrated Reading Rack
Optional - Cable Management

Warranty: Visit www.precor.com for warranty terms.

GO.PRECOR.COM/EFX685

© 2021 Precor Incorporated.

PRECOR®

EFX® 665

Experience™ Series

ELLIPTICAL FITNESS CROSSTRAINER®

FS
Fitness Solutions

Product Features

1. Adjustable CrossRamp®

With our patented CrossRamp, exercisers can isolate or cross-train specific lower body muscle groups by adjusting the angle of the ramp between 10 and 35 degrees, making it easy for exercisers to focus on their individual fitness goals.

2. P62 Touchscreen Console

The P62 touchscreen console features personalized viewing and the remarkable clarity of TV and internet options that exercisers crave, all in a 10.1 in / 25.7 cm screen. With the ability to “favorite” selections for future use, exercisers can customize their workout experience based on what’s important to them.

3. Handlebars

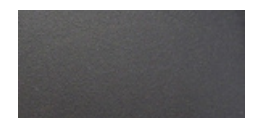
With moving handlebars, exercisers can push and pull with their upper body to achieve a total body workout.

4. Step-Up Height & Pedal Spacing

The low step-up height improves accessibility and the optimized pedal spacing provides a more natural and comfortable feel.

5. Covered Rear Drive Housing

Experience easy maintenance with a covered rear drive housing that enables quick access for cleaning and service.



Storm Grey

Refined colorways with dark Tungsten covers and two frame color options, Storm Grey and Black Pearl.



Black Pearl

Specifications

Dimensions (L x W x H): 82 x 30 x 72 in / 208 x 76 x 183 cm

Product Weight: 312 lb / 142 kg

Step-up Height: 8 in / 20 cm (pedal at lowest point)

Power: 120 volt, 15 amp circuit

Total Workouts: 22

Resistance Levels: 20

Ramp Angle: 10 - 35 degrees

Languages: English, Danish, Dutch, French, Finnish, German, Italian, Japanese, Korean, Norwegian, Polish, Portuguese, Russian, Simplified Chinese, Spanish, Swedish, Traditional Chinese, Turkish

Network Capabilities: Preva® network capable

Entertainment: 10.1 in / 25.7 cm LCD Capacitive Touchscreen
Mobile Device Charger and audio jack

Accessories: Integrated Reading Rack
Optional - Cable Management

Warranty: Visit www.precor.com for warranty terms.

GO.PRECOR.COM/EFX665

© 2021 Precor Incorporated.

PRECOR®

EFX[®] 635

Experience[™] Series

ELLIPTICAL FITNESS CROSSTRAINER[®]

FS
Fitness Solutions

Product Features

1. Adjustable CrossRamp[®]

With our patented CrossRamp, exercisers can isolate or cross-train specific lower body muscle groups by adjusting the angle of the ramp between 10 and 35 degrees, making it easy for exercisers to focus on their individual fitness goals.

2. P31 Console

The P31 console features easy-to-use motion controls and an LED display that focuses on the essential fitness stats to keep exercisers informed and engaged.

3. Handlebars

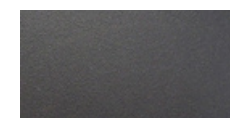
With moving handlebars, exercisers can push and pull with their upper body to achieve a total body workout.

4. Step-Up Height & Pedal Spacing

The low step-up height improves accessibility and the optimized pedal spacing provides a more natural and comfortable feel.

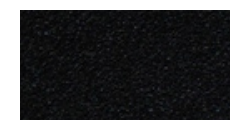
5. Covered Rear Drive Housing

Experience easy maintenance with a covered rear drive housing that enables quick access for cleaning and service.



Storm Grey

Refined colorways with dark Tungsten covers and two frame color options, Storm Grey and Black Pearl.



Black Pearl

Specifications

Dimensions (L x W x H): 82 x 30 x 68 in / 208 x 76 x 173 cm

Product Weight: 308 lb / 140 kg

Step-up Height: 8 in / 20 cm (pedal at lowest point)

Power: Self-Powered

Total Workouts: 15

Resistance Levels: 20

Ramp Angle: 10 - 35 degrees

Languages: English, French, German, Hebrew, Italian, Japanese, Portuguese, Russian, Spanish

Network Capabilities: C-SAFE enabled
Mobile Device Charger - Standard

Entertainment: Optional - 15.6 in / 39.6 cm Personal Viewing System (PVS)

Accessories: Integrated Reading Rack
Optional - Cable Management

Warranty: Visit www.precor.com for warranty terms.

GO.PRECOR.COM/EFX635

© 2021 Precor Incorporated.

PRECOR[®]